

Symphonie n° 2

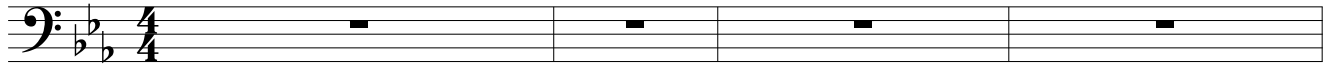
Violoncelle

1er mouvement

Violaine Prince

[Arrangeur]

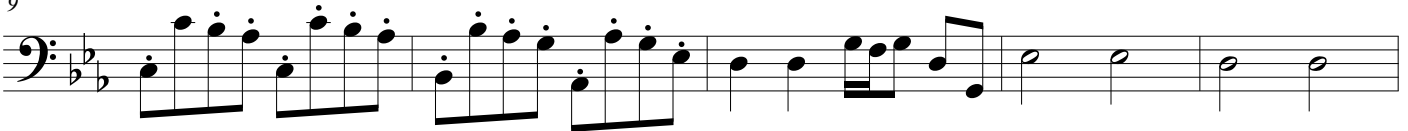
Andante maestoso ♩ = 100



4



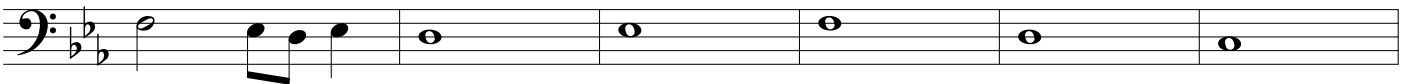
9



14



21



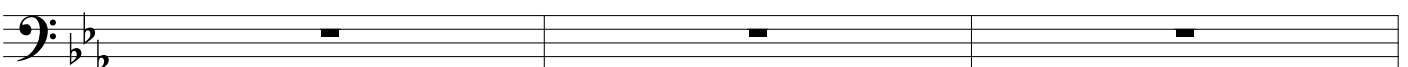
27



31



36



39

Three measures of whole rests in the bass clef, B-flat major key signature.

42

Three measures of whole rests in the bass clef, B-flat major key signature.

45

Six measures of eighth-note patterns in the bass clef, B-flat major key signature. The first three measures feature a steady eighth-note accompaniment, while the last three measures include eighth-note chords.

50

Six measures of quarter-note patterns in the bass clef, B-flat major key signature. The first two measures contain quarter notes, followed by four measures of whole rests.

56

Six measures of eighth-note patterns in the bass clef, B-flat major key signature. The first measure is a whole rest, followed by five measures of eighth-note patterns.

60

Six measures of eighth-note patterns in the bass clef, B-flat major key signature. The first measure is a whole rest, followed by five measures of eighth-note patterns.

64

Six measures of quarter-note patterns in the bass clef, B-flat major key signature. The first two measures are whole rests, followed by four measures of quarter-note patterns.

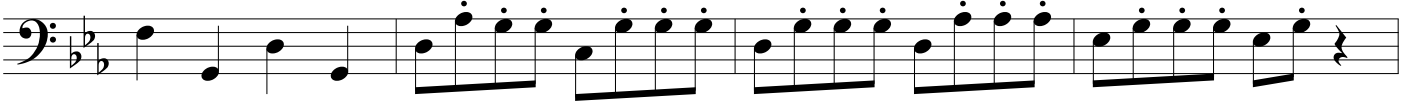
68

Six measures of quarter-note patterns in the bass clef, B-flat major key signature.

74

Six measures of quarter-note patterns in the bass clef, B-flat major key signature. The fourth measure contains four eighth notes with accents (>).

79



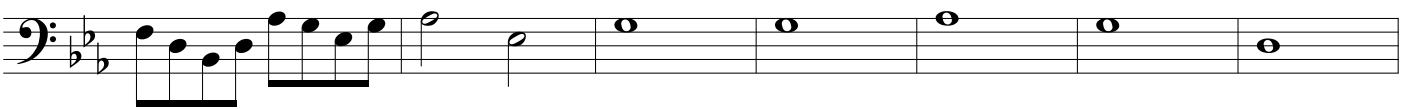
83



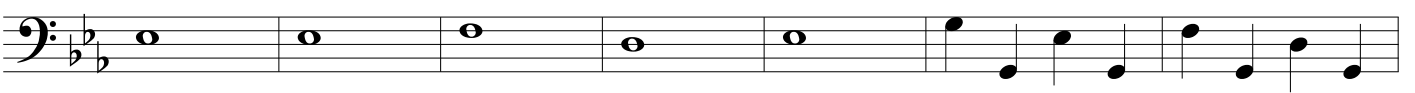
87



92



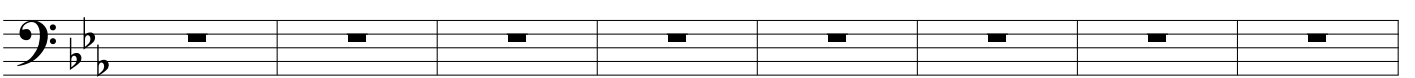
99



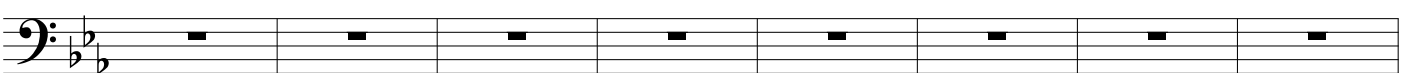
106



111



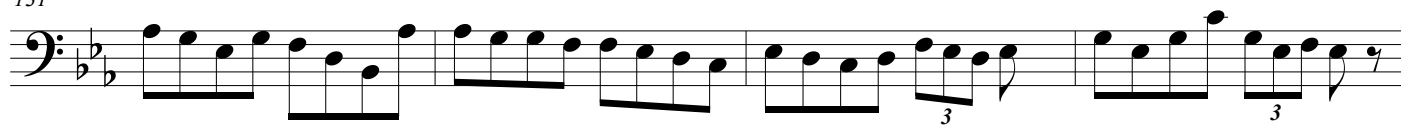
119



127



131



135



140

