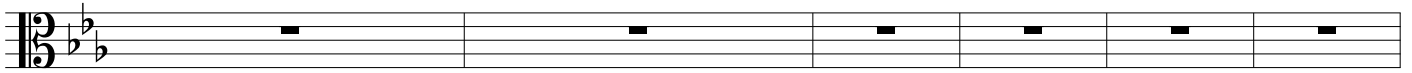
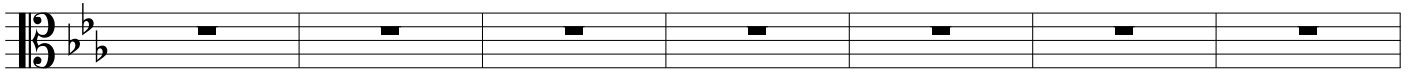




43



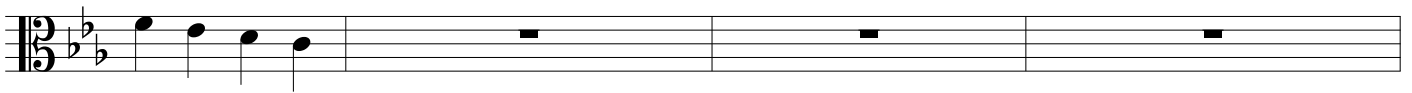
49



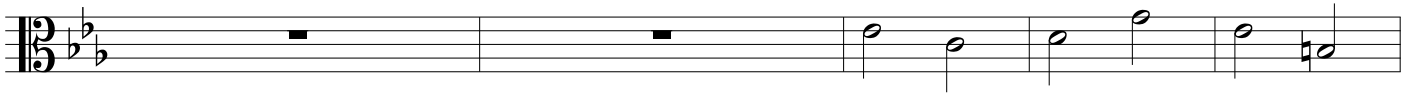
56



60



64



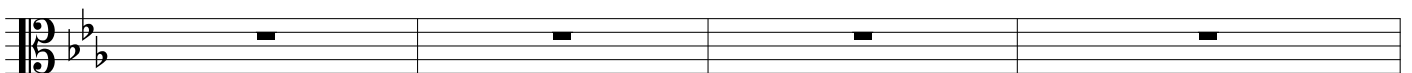
69



75



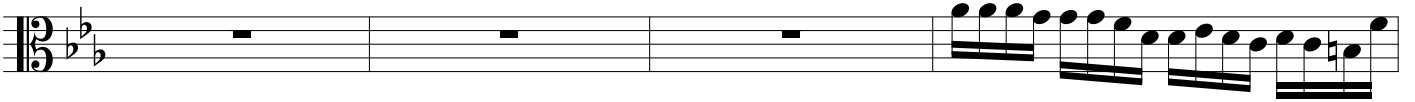
80



84



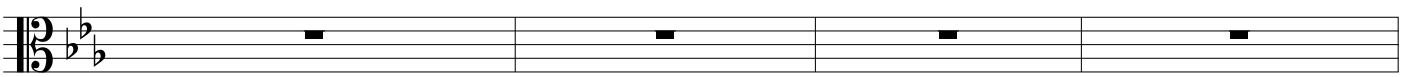
90



94



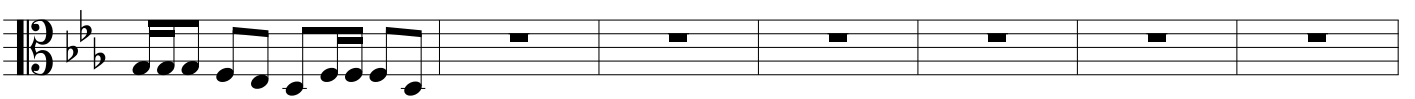
97



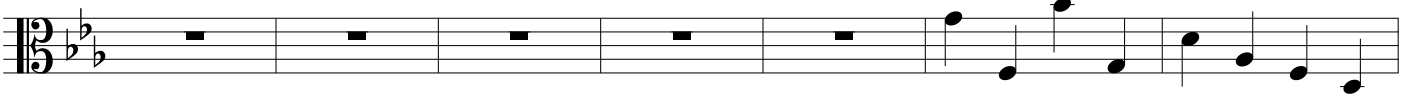
101



107



114



121



128



135



140

Musical score for Symphonie n° 2, page 4, starting at measure 140. The score is in bass clef with a key signature of one flat (B-flat). It consists of a single line of music with a treble clef. The melody starts with a quarter note G2, followed by quarter notes A2, B2, and C3. The next measure contains quarter notes D3, E3, and F3. The third measure has quarter notes G3, A3, and B3. The fourth measure has quarter notes C4, D4, and E4. The fifth measure has quarter notes F4, G4, and A4. The sixth measure has a quarter note B4. The seventh measure has a quarter note C5. The eighth measure has a quarter note D5. The piece ends with a double bar line.